

WH4000

Spheroidal graphite iron structure

Ratio 29 :1

Reduction unit with worm wheel and irreversible worm-screw. Reverse motion is possible only when the operator pulls the operating lever. Therefore this reduction system requires no brakes.

Manual drum clutch for drum engagement – disengagement

1st cable layer pulling capacity measured by dynamometer: 4000 kg

Zinc-plated steel cable guide with sliding rollers

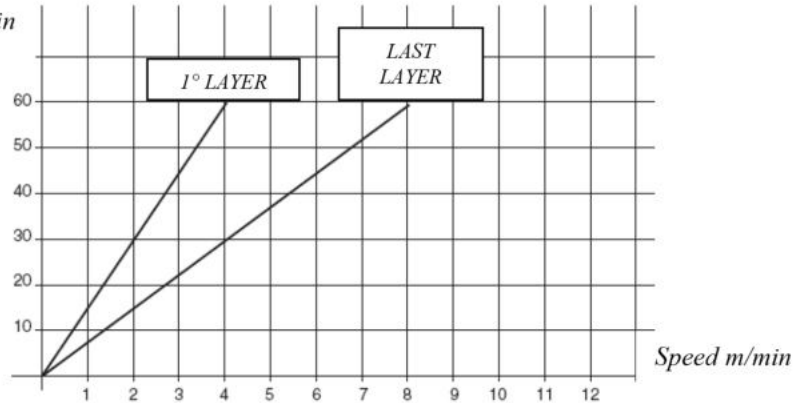
Hydraulic motor available in short and long versions

Recommended cable (extra): Ø 12 mm - max. cable capacity: 70 m

Total weight without cable: 83 kg

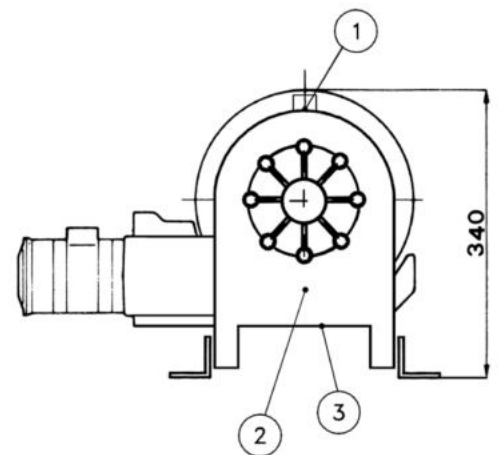
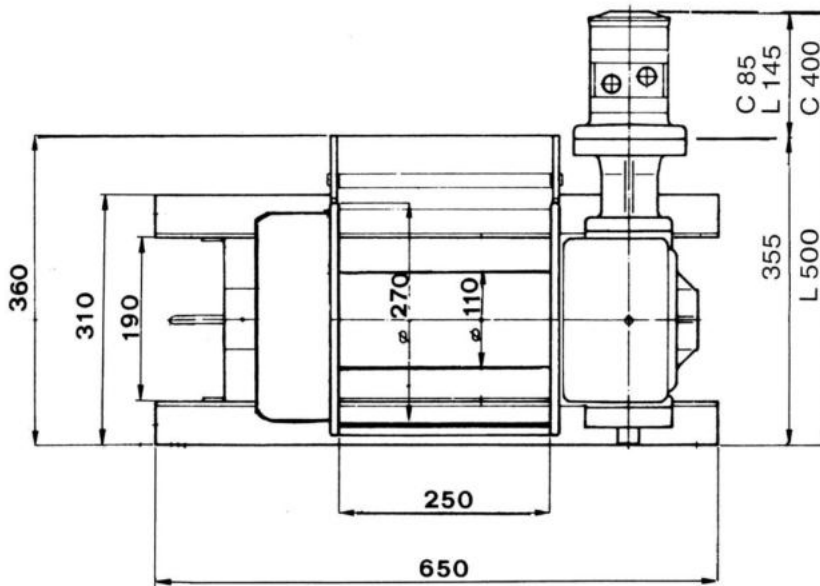
Cable winding speed diagram

Flow rate l/min



Relief valve setting:
140 bar

Suggested flow to the motor:
60 l/min



CABLE LAYER	LINE PULL	CABLE LENGTH
1 st	4020 kg	7,20 m
2 nd	3300 kg	16,00 m
3 rd	2800 kg	26,00 m
4 th	2420 kg	38,00 m
5 th	2140 kg	51,50 m
6 th	1920 kg	66,60 m
Max. cable capacity: 70 m Ø 12 mm		

- 1 - Oil filling plug
- 2 - Oil level plug
- 3 - Oil drain plug